



**MADERO 20**

FROM TRADITIONAL ROOTS  
COMES MODERN LIVING





**Welcome to Madero 320**, where local heritage meets contemporary design. Created by Alvaro Gómez, one of the region's most renowned architects with a landmark history of 25 buildings across Banderas Bay, Madero 320 is tropical lifestyle reimaged and inspired by Puerto Vallarta.

All information contained herein is deemed reliable and was secured from reliable sources. Tropicasa Realty accepts no liability for any error or omission in any of this information. Any and all information is subject to change without notice at any time. All renders and views are conceptual and subject to change without notice.

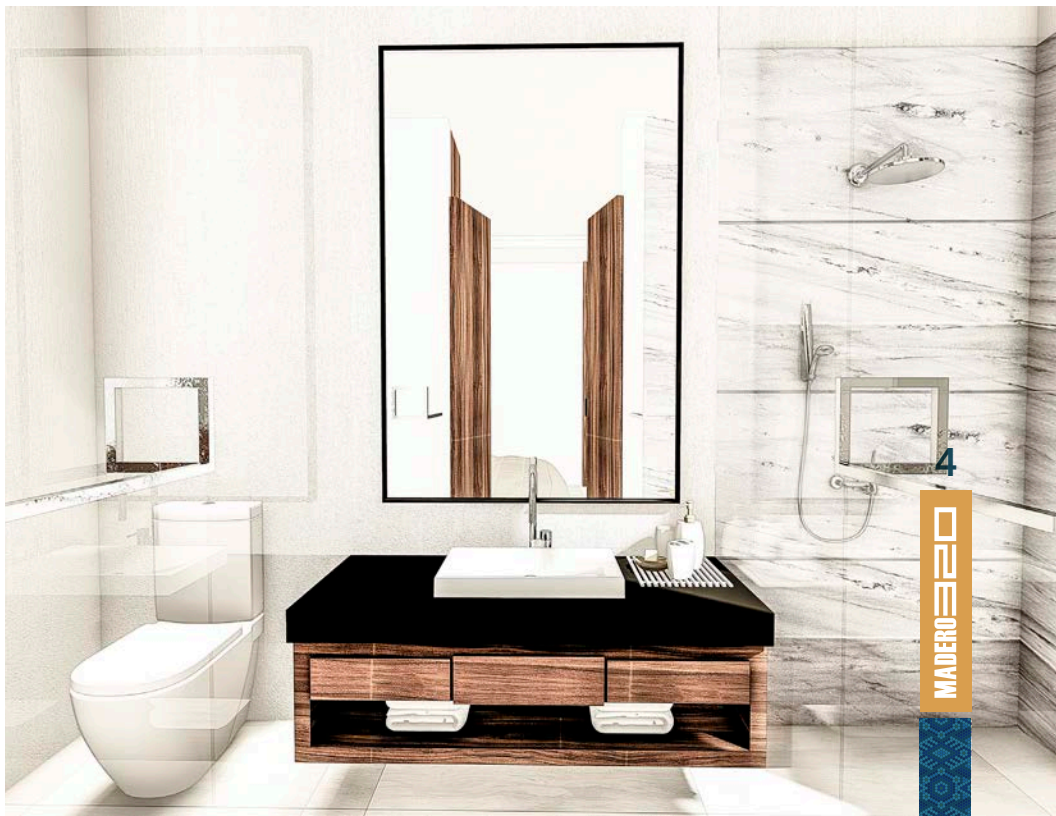
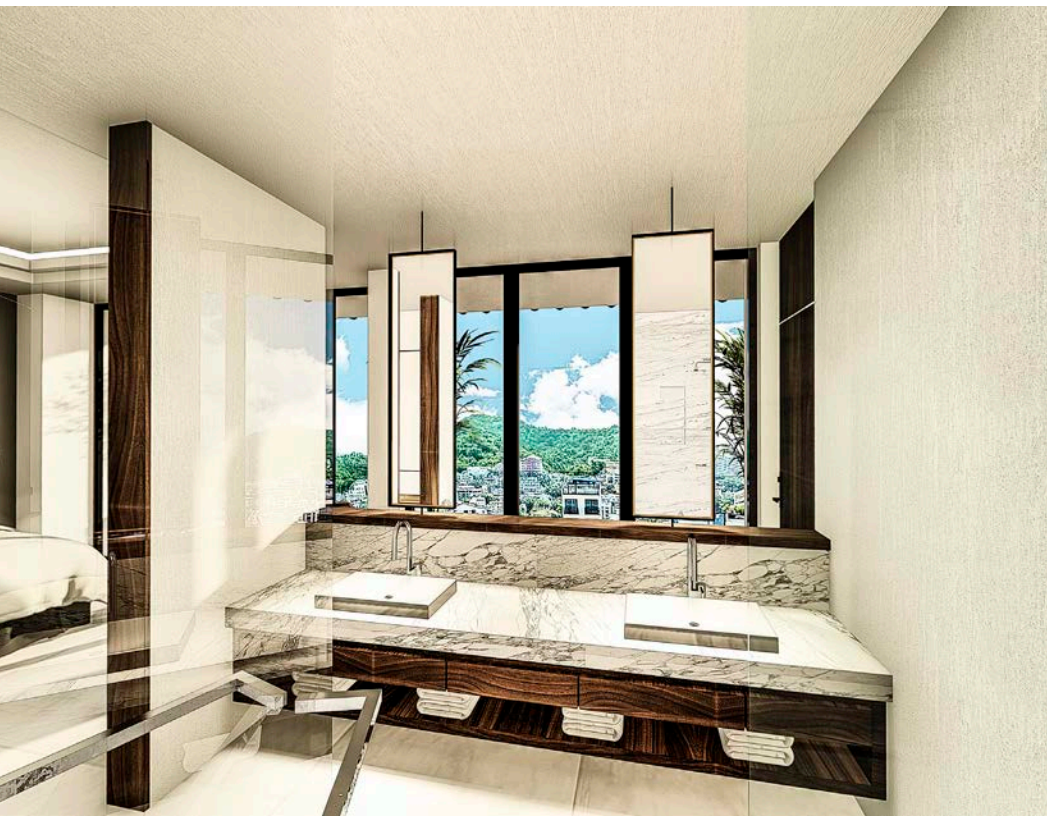


With a collection of 58 living environments and a curated assortment of 6 unique floorplans, Madero 320 pairs clean lines with rich textures and locally-sourced wood accents throughout each residence, merging modern sophistication with the warmth of traditional Mexican design.

Sip a morning coffee from your private terrace overlooking the town, the Pacific, or the lush Sierra Madre mountainside. Spend sunny days by the pool at the spectacular Ciprés Roof Terrace with wide ocean and city views, take your pet for a stroll to the beach just blocks away, and spend evenings exploring the eateries and entertainment found in the famous Puerto Vallarta Romantic Zone.









# ARCHITECT

Architect Alvaro Gómez heads Habitat Designers & Contractors, a skilled team of professionals from different disciplines with over 25 years of experience creating some of the most iconic architectural projects in Puerto Vallarta, Punta Mita and around the Banderas Bay region.

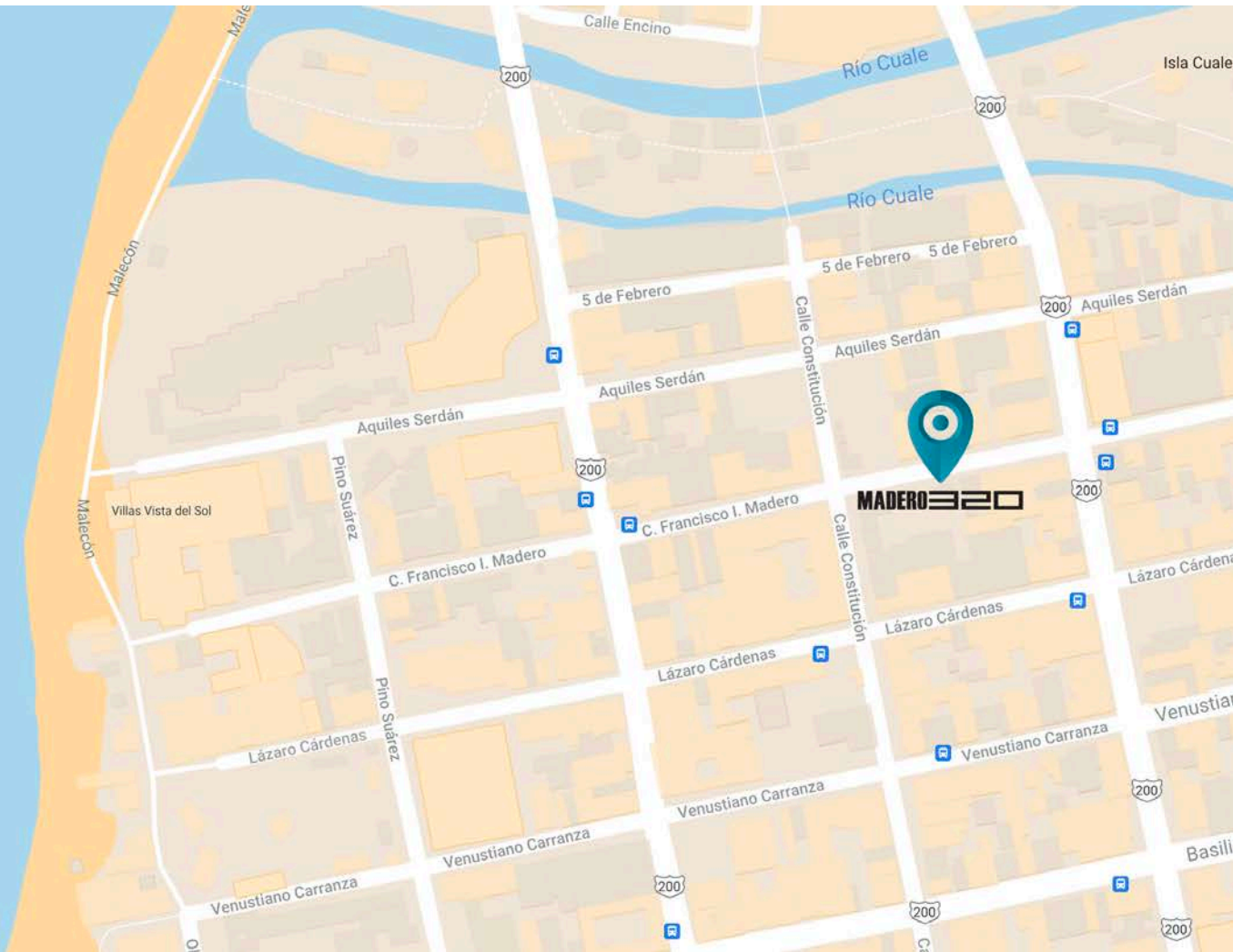
With an extensive portfolio of over 25 urban projects, private luxury residences and full-scale condo developments in Puerto Vallarta and the region, Alvaro Gómez is known for quality construction, fine attention to detail, and adding traditional Mexican touches to the modern design and architecture, for public and private environments which exceed expectation and elevate tropical living in Mexico.





# LOCATION

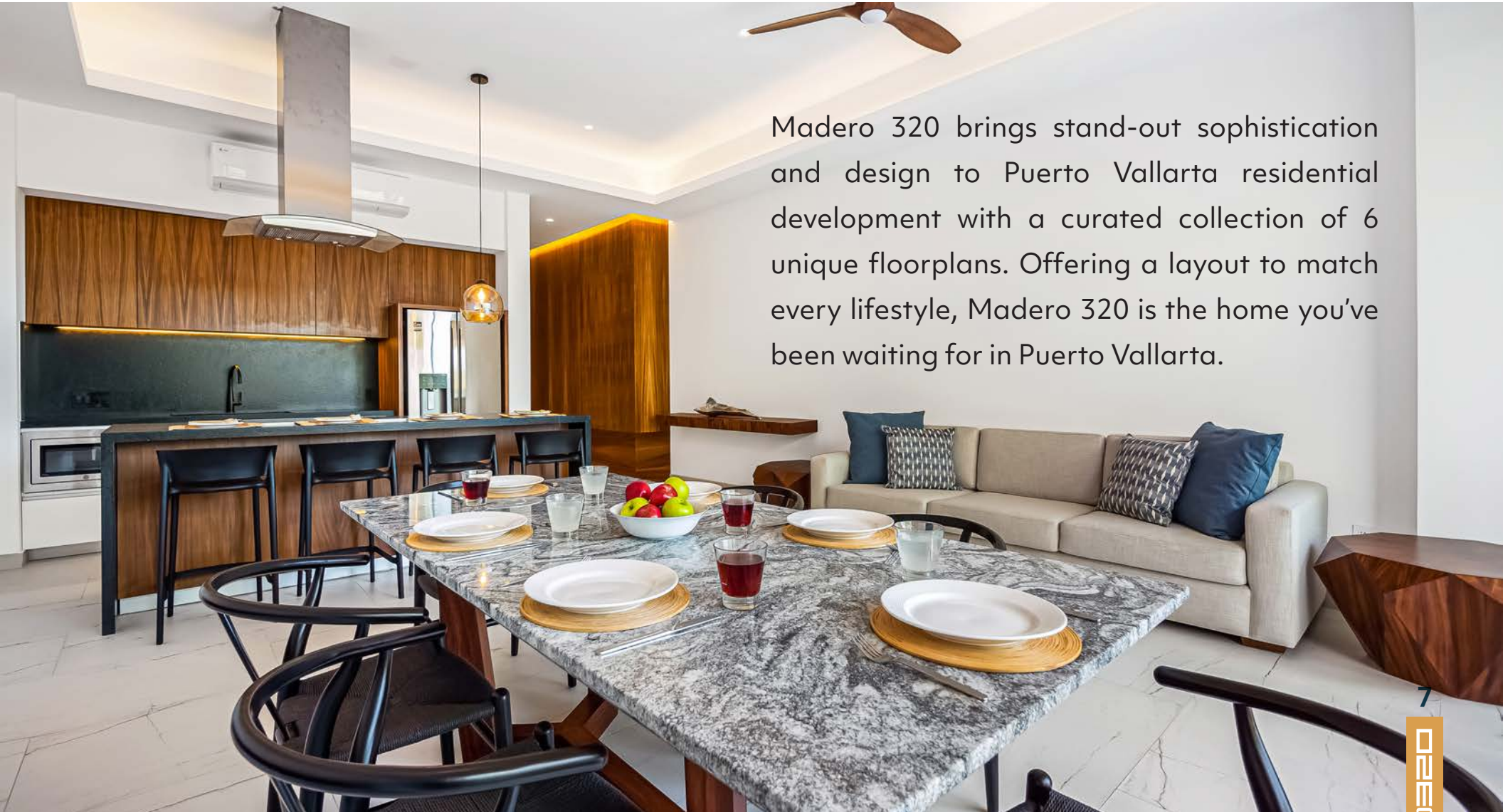
Madero 320 puts you in the very center of Vallarta living, just three blocks from the famed Los Muertos Beach. Stroll to shops, some of the best restaurants in Puerto Vallarta, art galleries, live entertainment and the popular Old Town Farmers Market. Living in Puerto Vallarta has never been easier than at Madero 320 with services and amenities close by.





# UNITS

Madero 320 brings stand-out sophistication and design to Puerto Vallarta residential development with a curated collection of 6 unique floorplans. Offering a layout to match every lifestyle, Madero 320 is the home you've been waiting for in Puerto Vallarta.



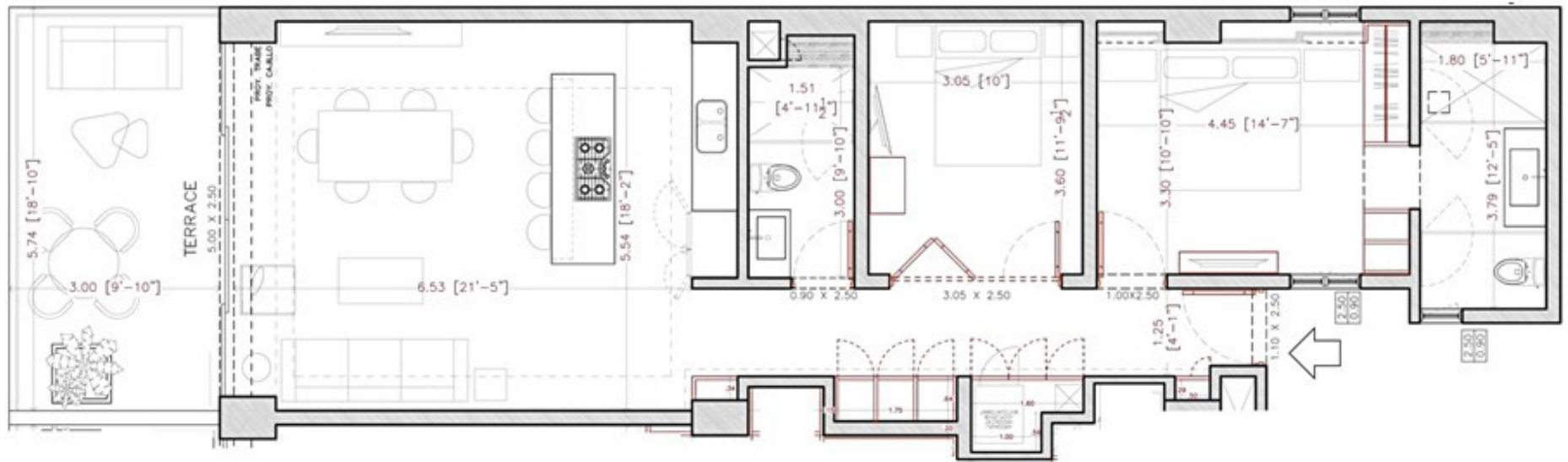
All information contained herein is deemed reliable and was secured from reliable sources. Tropicasa Realty accepts no liability for any error or omission in any of this information. Any and all information is subject to change without notice at any time. All renders and views are conceptual and subject to change without notice.



# TYPE A

2 bedroom, 2 bathroom with private terrace

1311 sqft | 121.82 m2

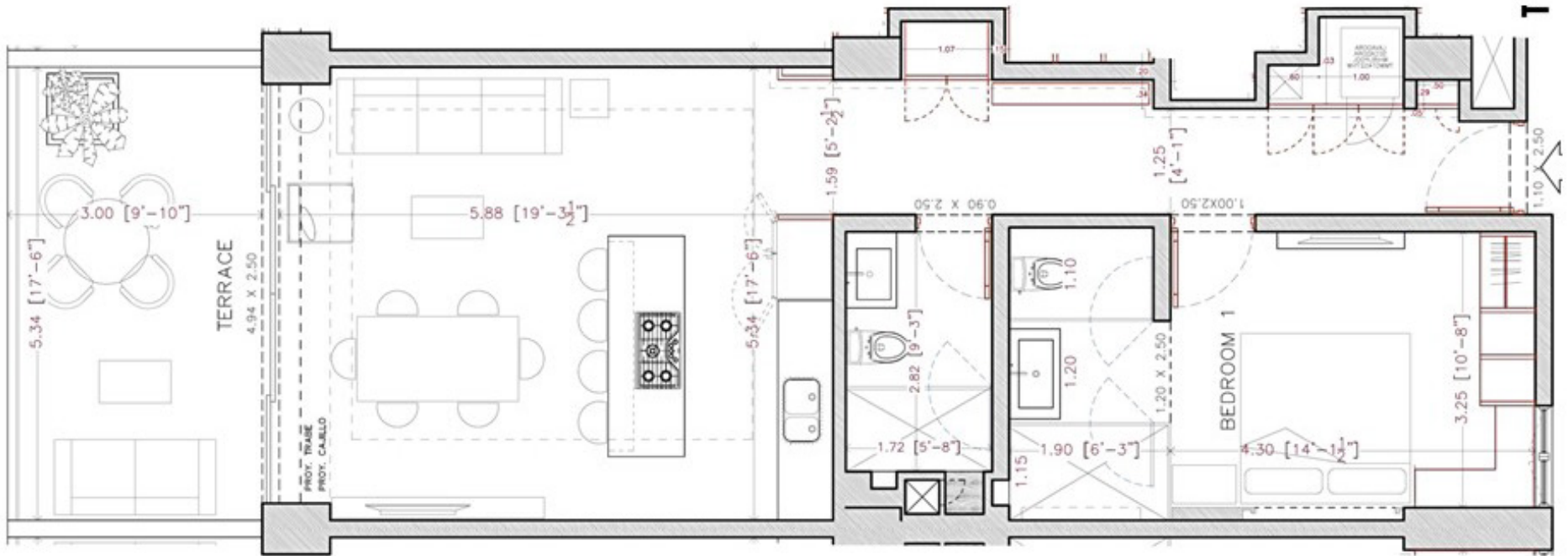


**MADERO** **HABITAT 1**  
DESIGNERS & CONTRACTORS





**1 bedroom, 2 bathroom with private terrace**  
1079 sqft | 100.28 m2



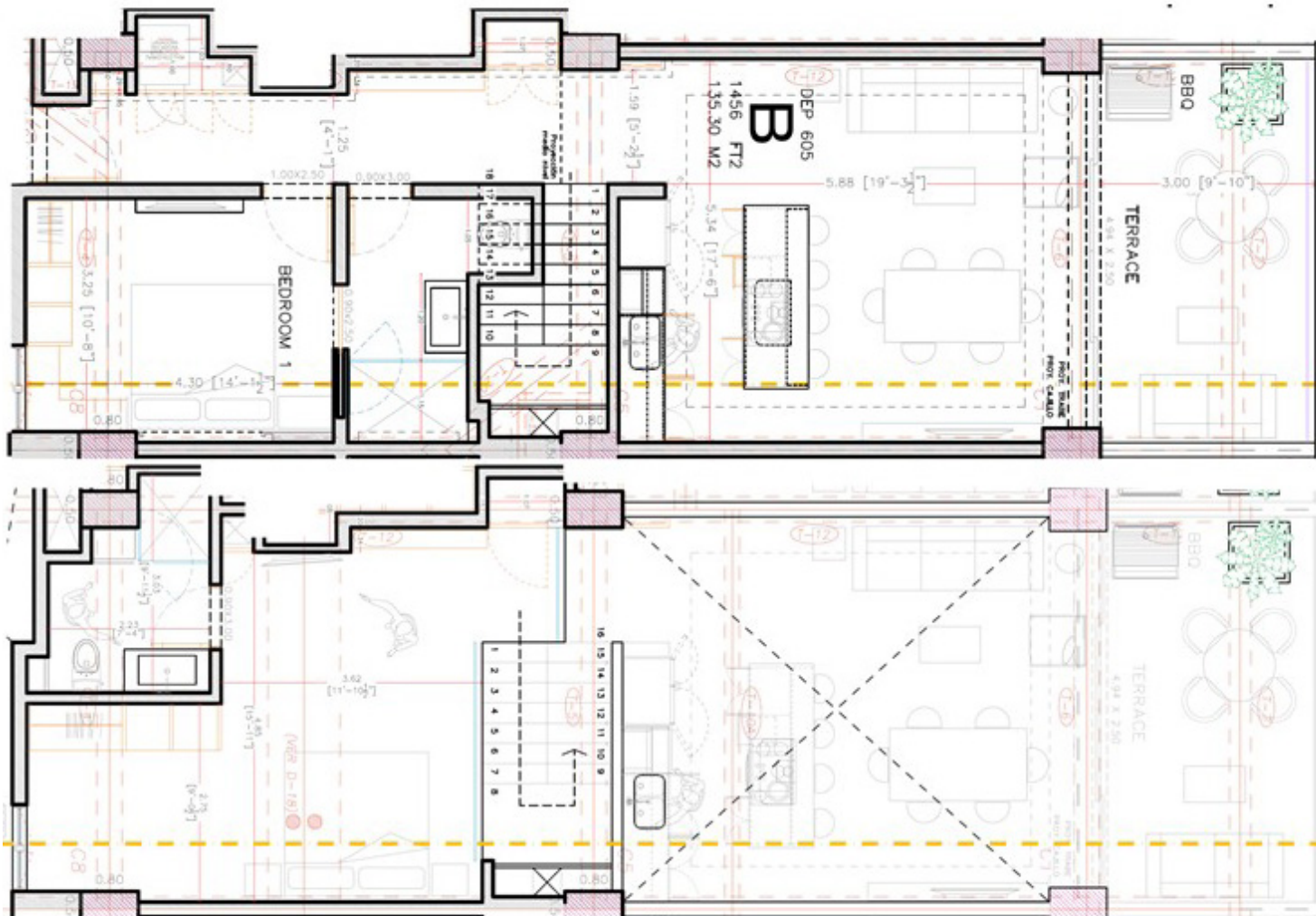


# TYPE B DOUBLE

2 story, 2 bedroom, 2 bathroom with private terrace

1456 sqft | 135.30 m2

**MADERO**  **HABITAT 1**  
DESIGNERS & CONTRACTORS



All information contained herein is deemed reliable and was secured from reliable sources. Tropicasa Realty accepts no liability for any error or omission in any of this information. Any and all information is subject to change without notice at any time. All renders and views are conceptual and subject to change without notice.

# TYPE C

1 bedroom, 2 bathroom with private balcony  
1070 sqft | 99.44 m<sup>2</sup>

**MADERO**  **HABITAT 1**  
DESIGNERS & CONTRACTORS



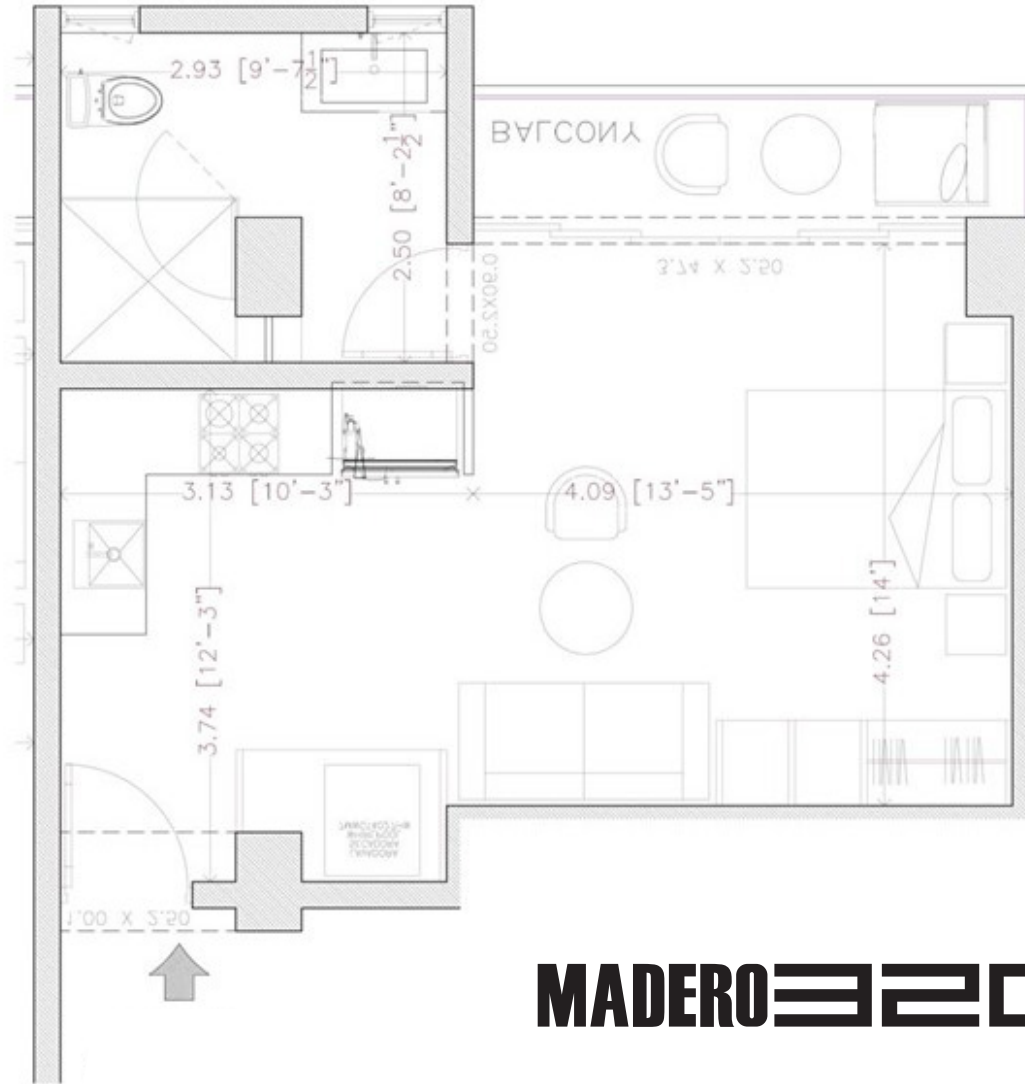
All information contained herein is deemed reliable and was secured from reliable sources. Tropicasa Realty accepts no liability for any error or omission in any of this information. Any and all information is subject to change without notice at any time. All renders and views are conceptual and subject to change without notice.



# TYPE D

Studio, 1 bathroom with private balcony

498 sqft | 46.28 m2

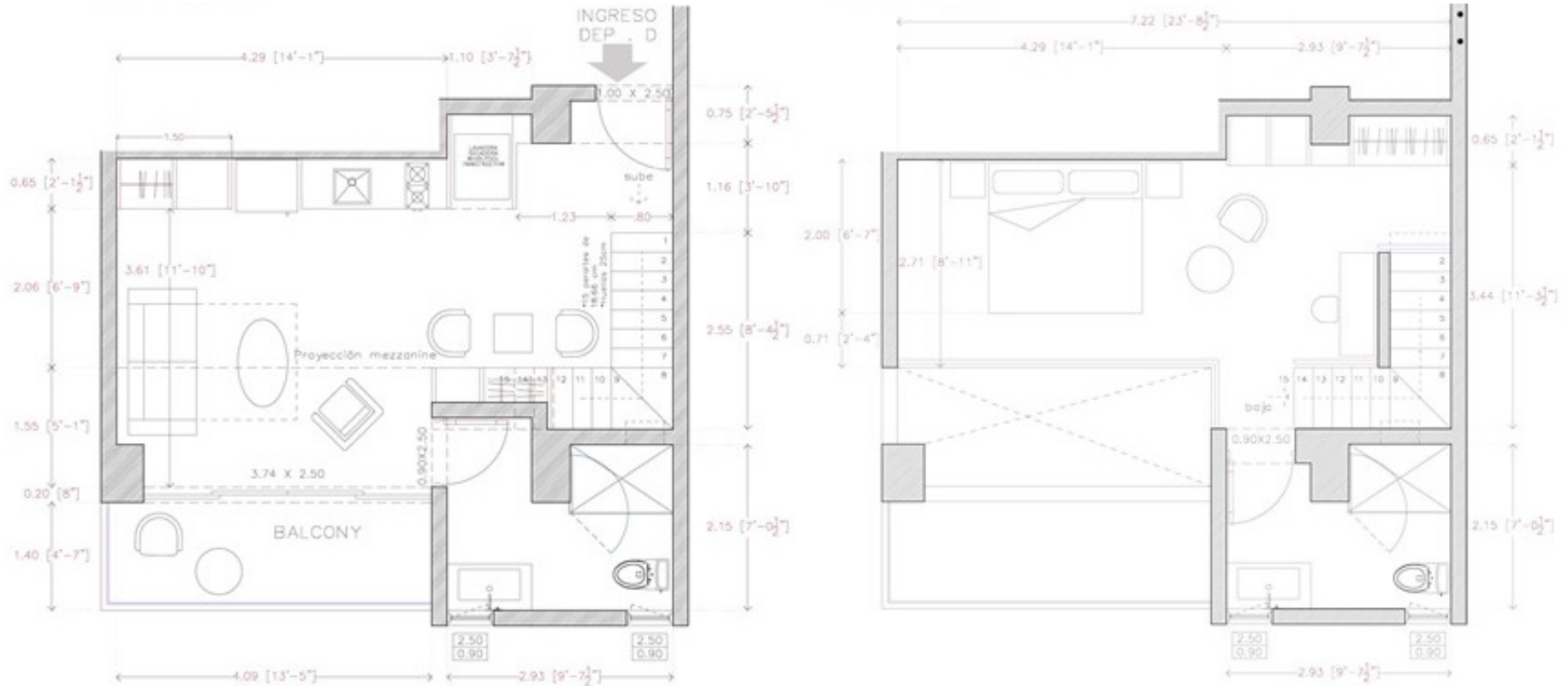


**MADERO** **HABITAT 1**  
DESIGNERS & CONTRACTORS

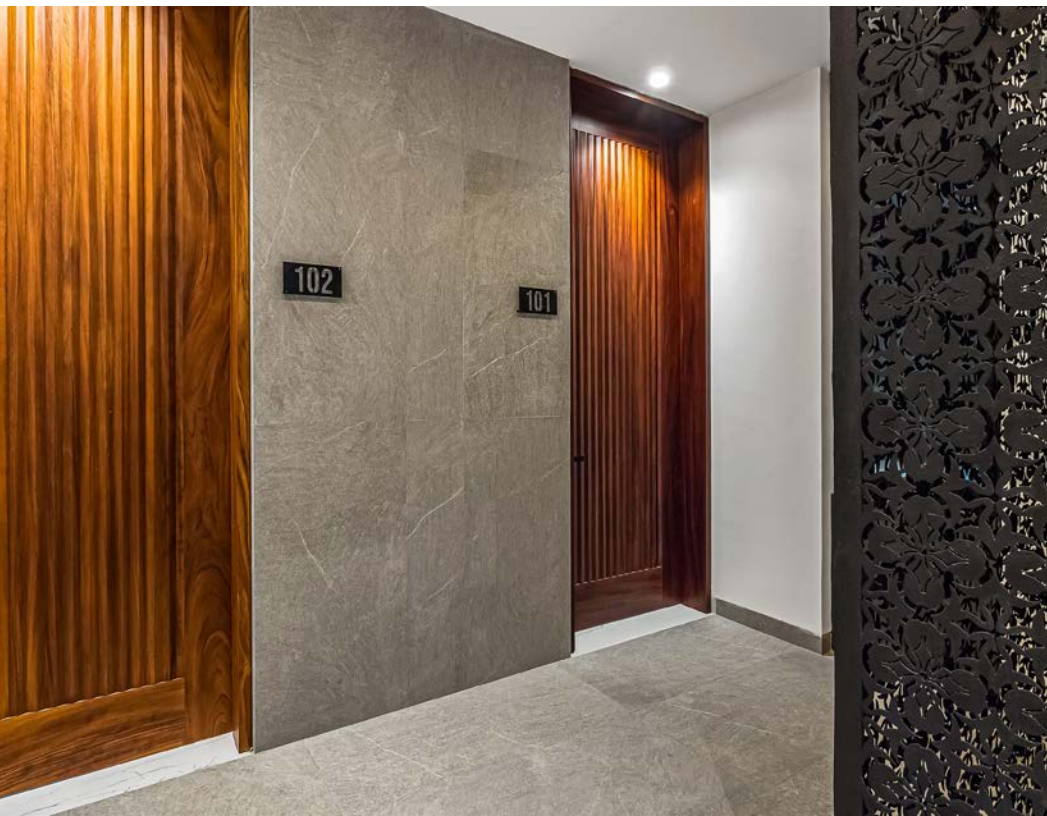
# TYPE D DOUBLE

2 story, 1 bedroom, 2 bathroom with private terrace

847.45 sq ft | 78.73 m<sup>2</sup>









# FEATURES



Madero 320 offers high quality features and amenities that maximize the comfort, value, and enjoyment of your Puerto Vallarta property while merging modern tropical living with the legacy of traditional Mexican design.

All information contained herein is deemed reliable and was secured from reliable sources. Tropicasa Realty accepts no liability for any error or omission in any of this information. Any and all information is subject to change without notice at any time. All renders and views are conceptual and subject to change without notice.



# LIFESTYLE AMENITIES



## THE CIPRÉS ROOF TERRACE

- Heated rooftop infinity-edged pool
- Jacuzzi
- Shaded lounge areas and cabanas
- Beautiful anti-slip stone flooring
- Outdoor kitchen and bar with BBQ area
- Bathrooms and changing areas
- Gorgeous wide ocean and city views

## THE ACACIA FITNESS ROOM

- Cardio machines
- Free and standing weights
- Mirrored stretch area
- Fully air-conditioned

All information contained herein is deemed reliable and was secured from reliable sources. Tropicasa Realty accepts no liability for any error or omission in any of this information. Any and all information is subject to change without notice at any time. All renders and views are conceptual and subject to change without notice.

# BUILDING FEATURES

- Exclusive development of 58 units
- Prime Romantic Zone location, 3 blocks from the beach
- Ocean, city, and mountain views
- 24-hour security
- Underground parking\*
- Welcoming lobby with soaring ceilings, reception desk and wood accents
- 2 elevators
- Textural design elements of stone, iron, wood, and marble throughout
- Pet and rental-friendly



# MADERO 20

\* Limited spaces may be available at additional cost.

All information contained herein is deemed reliable and was secured from reliable sources. Tropicasa Realty accepts no liability for any error or omission in any of this information. Any and all information is subject to change without notice at any time. All renders and views are conceptual and subject to change without notice.



# UNIT FEATURES

- Fully-equipped kitchen including stovetop and oven, range hood, dishwasher, and microwave
- HELVEX or equivalent chrome faucet and stainless-steel kitchen sink
- Granite kitchen countertops and islands
- High-quality porcelain tile flooring throughout
- Marble vanity in the bathrooms
- HELVEX or equivalent chrome bathroom fixtures
- Solid floor-to-ceiling Parota wood entrance doors
- Parota wood cabinetry in bathrooms
- Shower stalls tiled from floor to ceiling
- Energy-efficient TRANE inverter air-conditioners in the main living area and each bedroom
- Parota wood cabinetry and doors with stylish black hardware throughout
- LED ceiling lights
- PVC-framed glass sliding doors to the balcony
- Black iron railing around the terrace











**MADERO 20**



Floor	Unit Nr.	Type	Bed	Bath	sqft	m <sup>2</sup>	List Price	Status
<b>LEVEL 6</b>								
	A 401	Condo	2	2				SOLD
	B 402	Condo	1	2				SOLD
	B 403	Condo	1	2				SOLD
	B 404	Condo	1	2				SOLD
	B 405	Condo	1	2				SOLD
	A 406	Condo	2	2				SOLD
	D 407	Studio	0	1				SOLD
	E 408	Studio	0	1				SOLD
	E 409	Studio	0	1				SOLD
	D 410	Studio	0	1				SOLD
<b>LEVEL 7</b>								
	A 501	Condo	2	2				SOLD
	B 502	Condo	1	2				SOLD
	B 503	Condo	1	2				SOLD
	B 504	Condo	1	2				SOLD
	B 505	Condo	1	2				SOLD
	A 506	Condo	2	2				SOLD
	<b>C 507</b>	<b>Condo</b>	<b>1</b>	<b>2</b>	<b>1070</b>	<b>99.44</b>	<b>\$500,400</b>	<b>AVAILABLE</b>
	C 508	Condo	1	2				SOLD
<b>LEVEL 8</b>								
	A 601	2-story						SOLD
	B 602	2-story	2	2				SOLD
	B 603	2-story						SOLD
	B 604	2-story						SOLD
	<b>B 605</b>	<b>2-story</b>	<b>2</b>	<b>2</b>	<b>1456</b>	<b>135.30</b>	<b>\$896,207</b>	<b>AVAILABLE</b>
	B 606	2-story						SOLD
	<b>D 607</b>	<b>2-story</b>	<b>1</b>	<b>1</b>	<b>807</b>	<b>75.00</b>	<b>\$485,545</b>	<b>AVAILABLE</b>
	E 608	2-story						SOLD
	E 609	2-story						SOLD
	D 610	2-story						SOLD

SOLD
RESERVED
AVAILABLE

All information contained herein is deemed reliable and was secured from reliable sources. Tropicasa Realty accepts no liability for any error or omission in any of this information. Any and all information is subject to change without notice at any time. All renders and views are conceptual and subject to change without notice.

Toda la información contenida en el presente documento se considera fiable y se obtuvo de fuentes fiables. Tropicasa Realty no acepta ninguna responsabilidad por cualquier error u omisión en esta información. Toda la información está sujeta a cambios sin previo aviso en cualquier momento. Todos los renders y vistas son conceptuales y están sujetas a cambios sin previo aviso.





# MADERO E20



Floor	Unit Nr.	Type	Bed	Bath	sqft	m <sup>2</sup>	List Price	Status
LEVEL 3								
	A 101	Condo	2	2				SOLD
	B 102	Condo	1	2				SOLD
	B 103	Condo	1	2				SOLD
	B 104	Condo	1	2				SOLD
	B 105	Condo	1	2				SOLD
	A 106	Condo	2	2				SOLD
	D 107	Studio	0	1				SOLD
	E 108	Studio	0	1				SOLD
	E 109	Studio	0	1				SOLD
	D 110	Studio	0	1				SOLD
LEVEL 4								
	A 201	Condo	2	2				SOLD
	B 202	Condo	1	2				SOLD
	B 203	Condo	1	2				SOLD
	B 204	Condo	1	2				NOT AVAILABLE
	B 205	Condo	1	2				NOT AVAILABLE
	A 206	Condo	2	2				SOLD
	D 207	Studio	0	1				SOLD
	E 208	Studio	0	1				SOLD
	E 209	Studio	0	1				SOLD
	D 210	Studio	0	1				SOLD
LEVEL 5								
	A 301	Condo	2	2				SOLD
	B 302	Condo	1	2				SOLD
	B 303	Condo	1	2				SOLD
	B 304	Condo	1	2				SOLD
	B 305	Condo	1	2				SOLD
	A 306	Condo	2	2				SOLD
	D 307	Studio	0	1				SOLD
	E 308	Studio	0	1				SOLD
	E 309	Studio	0	1				SOLD
	D310	Studio	0	1				SOLD

SOLD
RESERVED
AVAILABLE

All information contained herein is deemed reliable and was secured from reliable sources. Tropicasa Realty accepts no liability for any error or omission in any of this information. Any and all information is subject to change without notice at any time. All renders and views are conceptual and subject to change without notice.

Toda la información contenida en el presente documento se considera fiable y se obtuvo de fuentes fiables. Tropicasa Realty no acepta ninguna responsabilidad por cualquier error u omisión en esta información. Toda la información está sujeta a cambios sin previo aviso en cualquier momento. Todos los renders y vistas son conceptuales y están sujetas a cambios sin previo aviso.

**CONTACT US TO LEARN MORE ABOUT MADERO 320**

**MADERO 320**

**HABITAT 1**  
DESIGNERS & CONTRACTORS



*Building Community Through Real Estate Since 1997*

**ON-SITE SALES OFFICE**

Open daily 10:00 am to 6:00 pm

Francisco I. Madero 320, Col. Emiliano Zapata

Phone: 322.222.6505

USA Toll Free: 1.888.420.0966

***tropicasa.com/madero320 | info@tropicasa.com***

All information contained herein is deemed reliable and was secured from reliable sources. Tropicasa Realty accepts no liability for any error or omission in any of this information. Any and all information is subject to change without notice at any time. All renders and views are conceptual and subject to change without notice.